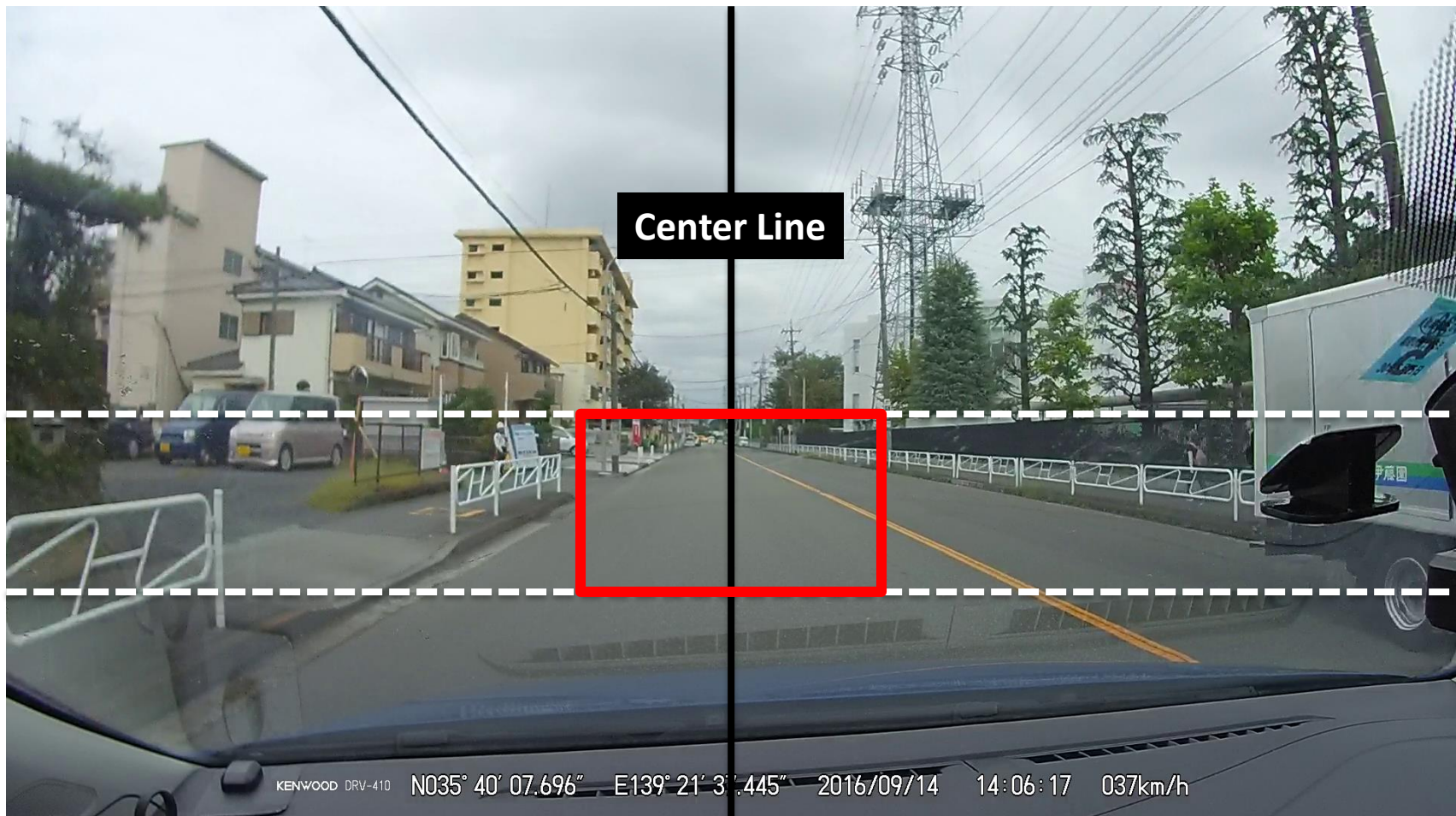


Initial set-up for driver alert function

In order to optimise “Driver Alert Function”, adjustment of “Center Point” and “Horizon” is very important. to prevent unnecessary audio alerts.



Center Point

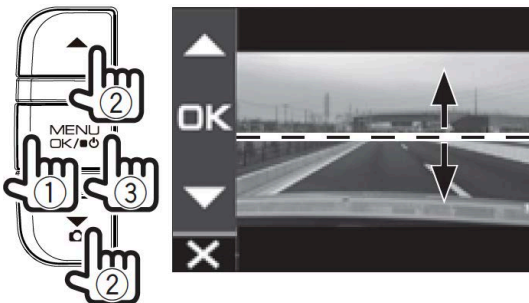
1. Adjust the installation angle of the device and then fix the DRV-410 in place.

Turn the angle adjustment knob clockwise before adjustment. When adjusting the installation angle, check that the camera field of view is parallel to a level ground surface and that the ratio of the sky and ground are the same. After adjusting the installation angle, turn the angle adjustment knob of the adjustment bracket counterclockwise to fix the DRV-410 in place



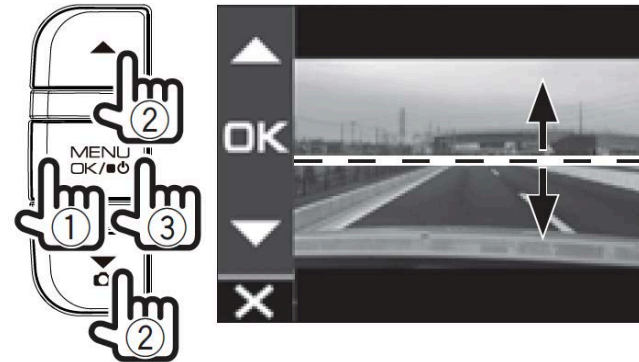
2. Press the [MENU/OK] button, use the [▲]/[▼] buttons to align the guideline with the horizon, and then press the [MENU/OK].

Adjust as shown below



3. Press the [MENU/OK] button, use the buttons [▲]/[▼] to align the guideline with the bonnet front edge, and then press the [MENU/OK].

Adjust as shown below



Horizon

1. Press the [MENU/OK] button, use the [▲]/[▼] buttons to align the guideline with the horizon, and then press the [MENU/OK].

Adjust as shown below

