

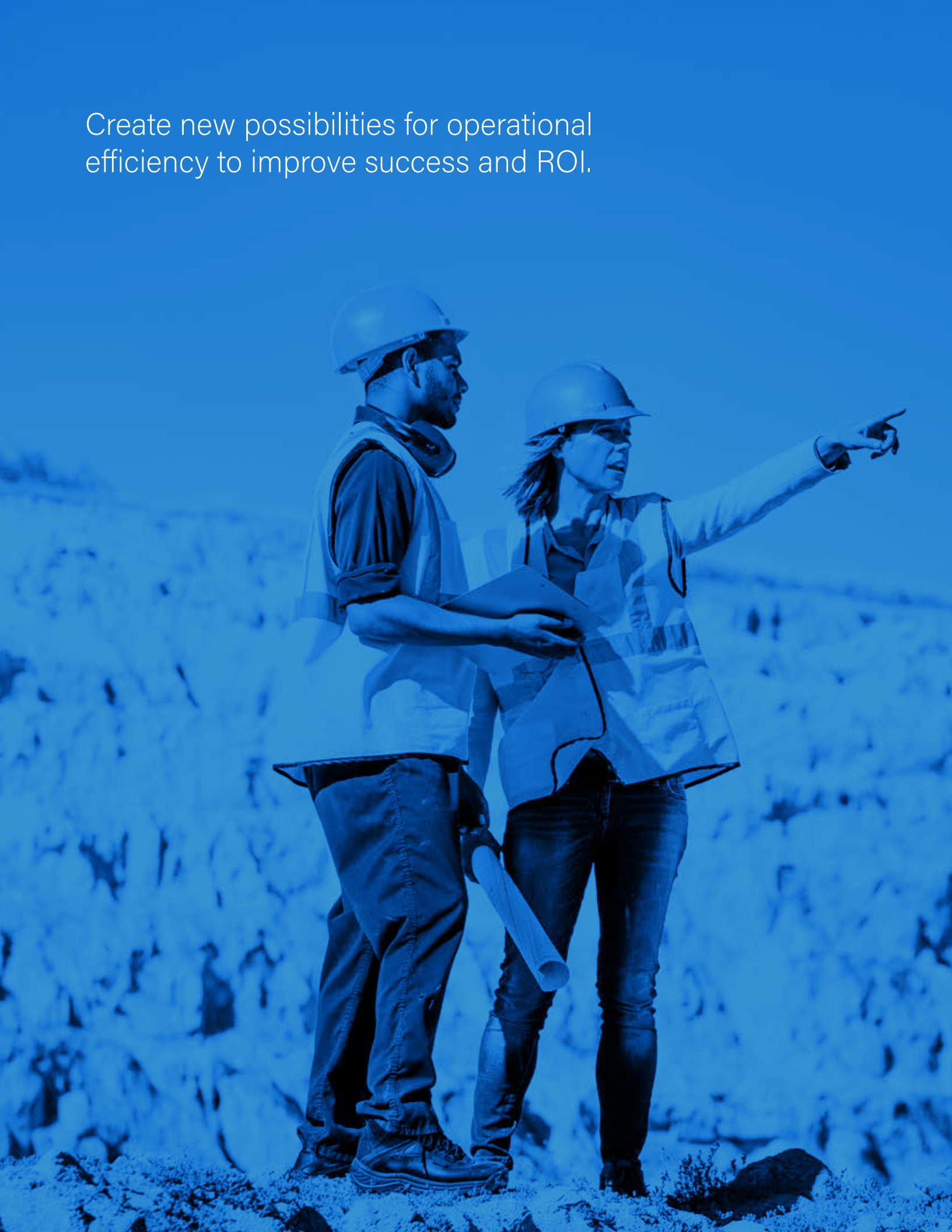
KENWOOD



EFFICIENT, REAL-TIME MONITORING AND TRACKING

 **Trackuracy**
Indoor/Outdoor Positioning & Tracking

Create new possibilities for operational efficiency to improve success and ROI.





Indoor/Outdoor Positioning & Tracking

With Trackuracy, you can monitor people and assets within your buildings, across all your site locations, and between buildings. When they take to the road in company vehicles, your view switches seamlessly between indoor and outdoor tracking. Best of all, It all happens inside a single application in your office.

In our fast-moving world, knowing the locations of the people and assets you rely on is critical. An integrated solution should work anywhere you need it to - indoors or outdoors. It's common for companies to use GPS to locate vehicles, or even people, outdoors. However, satellite signals typically are not strong enough to penetrate the roof of a building or through walls to provide accurate information for indoor location. GPS is generally inadequate for precise indoor location, performs poorly in multilevel structures, and can quickly drain a device's battery. For in-building location tracking, you need a solution that is designed specifically for this purpose.

You need Trackuracy, the Real Time Location System (RTLS) from JVCKENWOOD. Trackuracy integrates indoor and outdoor tracking with KENWOOD radio communication systems and provides the tools you need to secure your site.

INTEGRATED TOOLS FOR INDOOR AND OUTDOOR TRACKING

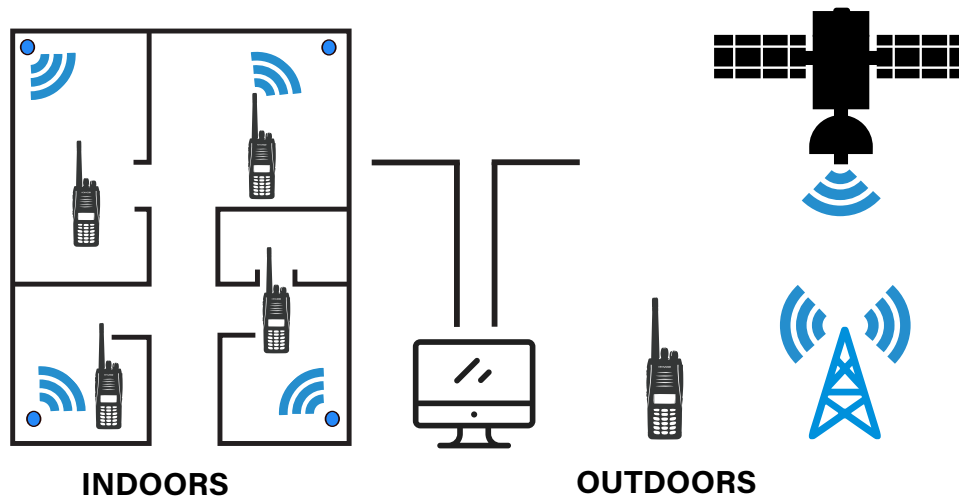
GPS based tracking isn't new. Whether you call it AVL or Fleet Management - tools to understand where vehicles are in near-real-time have been around for years. What is new is integrating indoor tracking with outdoor tracking in a single, easy to use platform.

Trackuracy has standard outdoor functionality, such as alerts when someone leaves their assigned work area or expected route. The system also comes with alerting and reporting built around speed limits and adds basic fleet maintenance tracking. The built-in tools allow users to track radio maintenance and repairs separate from their vehicle fleet.

REAL TIME LOCATION SYSTEM (RTLS)

An RTLS helps you get the correct resources to the right place at the right time - all visible to you as it happens. Real-time, live-action views, reporting and analytics with the ability to automate actions and notifications form the backbone of a Trackuracy system. The right mix of beacons and smart sensors, combined with

GPS and the radio system you already have enable simple, cost-effective real-time tracking, reporting and recording of each person's location and status. Because Trackuracy is available in three different tiers, your solution is customised for the level of affordability and performance your situation requires.



FEATURES & BENEFITS

Trackuracy integrates indoor and outdoor functionality into simple-to-use tools, making it not just possible, but easy to solve big problems:

- **Receive location information for all emergency calls**
- **Trace contacts and areas needing sanitisation**
- **Increase productivity**
- **Shorten response times**
- **Document presence and responsiveness**
- **Reduce loss and liability**
- **Locate people indoors**
- **Enhance worker safety**
- **Set up Response Team procedures and reporting rules**
- **Dynamically create a geo-fenced perimeter around an incident**
- **Supplement the radio emergency button**
- **Assess response times and resources to drive operations**

Contact tracing, social distancing and place-based sanitisation planning are all possible with Trackuracy and our solution partners.

JETSTREAM ACCELERATION TECHNOLOGY

Trackuracy utilises Jetstream acceleration technology to report location data over networked Bluetooth sensors and replaces pushing data reporting through the radio system. On a traditional system, voice traffic and data services share the same bandwidth. In cases where there are a significant number of devices or frequent data reports, data traffic consumes a large amount of bandwidth on the

system. Each dedicated channel is limited in the data reported per minute, which can limit functionality. **By removing data traffic from the radio system, system owners no longer have to provision additional channels or manage reduced voice capacity.** Jetstream can enable thousands of position updates per minute without requiring LTE or using radio system resources.



DON'T SETTLE FOR LIMITED FUNCTIONALITY

We sat down with our customers and reviewed the issues they face that could be resolved with the right RTLS. A gap existed in the market that Trackuracy fills. Trackuracy delivers the three most critical things our customers were missing in an easy to use platform.

- **A real-time overview.**
Know what is happening on company grounds to quickly identify where an emergency is occurring and determine in real-time what people and assets are nearby to assist.
- **Historical data and analytics.**
Improve operations, provide accountability and limit liability by analysing data over an extended period of time instead of
- **Automated actions based on location.**
Automate actions based on location data to achieve operational efficiency. Whether it is notifying appropriate staff that someone is in a restricted area or tying into an existing building alert system, Trackuracy replaces manual processes that lead to delayed response times and reduces operational costs.

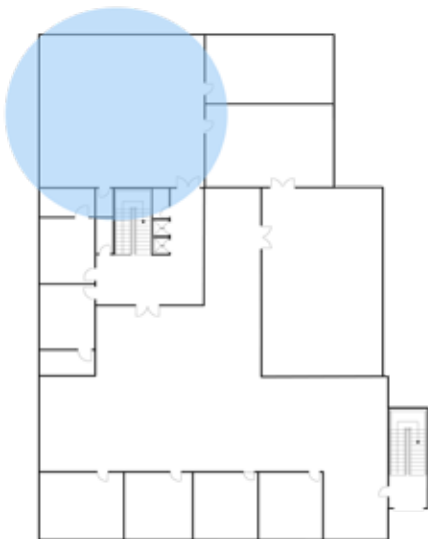
COMMON TASKS MADE EASIER

- Build situational awareness of regular activity so that developing situations stand out
- Define critical areas and increase alert levels
- Have confidence in the last known location of workers
- Prepare the procedures, and set up response team and reporting rules for automatic notifications
- Receive location information with all emergency calls including Man Down
- Confirm the arrival of assistance on scene

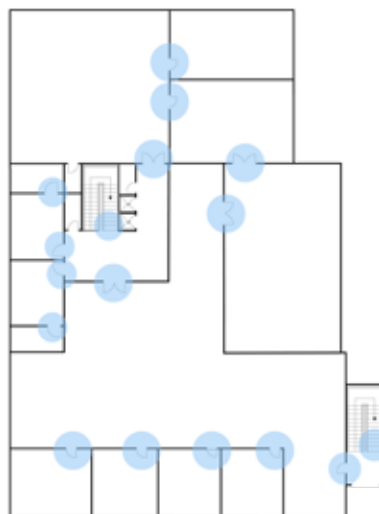
If operating in an Intrinsically Safe, or ATEX certified environment is one of your challenges, Trackuracy has a solution.

MIX AND MATCH METHODS OF TRACKING TO BEST MEET YOUR NEEDS

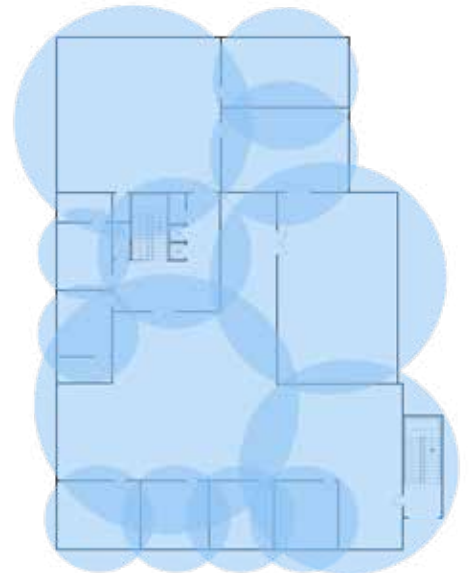
Customers with different areas of concern can tailor any level of a Trackuracy system at the time of deployment to meet their needs and budgets best.



Areas of interest



Entrances or Exits



Full Coverage

DIFFERENT MARKETS, DIFFERENT NEEDS

Trackuracy is a scalable, affordable solution designed to meet your specific needs and budget. Our configurations are suitable for any use case, from simple tracking to monitoring access to restricted areas or a comprehensive solution to

identify employees' location across your site. Many organisations have a variety of tracking needs. Trackuracy offers two tracking levels to provide varying tiers of accuracy and functionality.

		LEVEL 1	LEVEL 2
POSITIONING	Precision	Nearest beacon	3 meters
	Style	Proximity	Proximity or full 2D
	Method	Radio Reports	Sensors Triangulate
	Updates	Interval or Event	Continuous
	Geo-fencing	Basic	Basic & Advanced
	Panic button	✓	✓
RADIO MODES	DMR	✓	✓
	NXDN	✓	✓
	P25		✓
TRACKING	Radios	✓	✓
	Badges		✓
	Assets		✓
REPORTING	Data Export	✓	✓
	Pre-defined	✓	✓
	Custom		✓
	Analytics		
	Customer System Integration		



Pricing:

For pricing, discount levels and larger systems please speak with your account manager.



KENWOOD

JVCKENWOOD U.K. Ltd

First Floor, Gleneagles, The Belfry, 13 Colonial Way,
Watford, Hertfordshire, WD24 4WH

<https://kenwoodcommunications.co.uk>